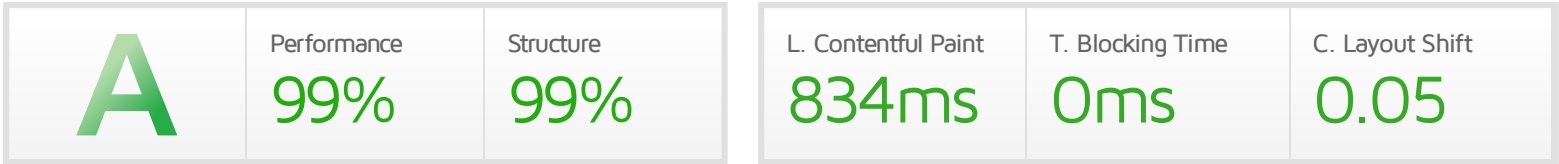
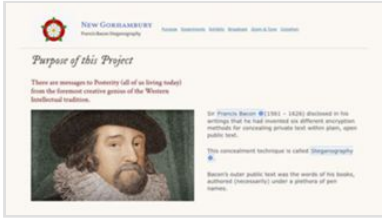


# Performance Report for: <https://gorhambury.org/>

Report generated: Sat, Mar 18, 2023 9:49 PM -0700  
 Test Server Location: Vancouver, Canada  
 Using: Chrome (Desktop) 103.0.5060.134, Lighthouse 9.6.4



## Top Issues

IMPACT	AUDIT	
Low	Serve static assets with an efficient cache policy	Potential savings of 44.9KB
Low	Properly size images	Potential savings of 454KB
Low	Avoid an excessive DOM size <small>TBT</small>	591 elements
Low	Avoid large layout shifts <small>CLS</small>	4 elements found
Low	Reduce unused JavaScript <small>LCP</small>	Potential savings of 151KB

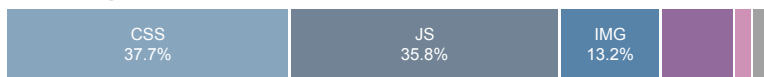
## Page Details



Total Page Size - 1.45MB



Total Page Requests - 53



HTML JS CSS IMG Video Font Other

## How does this affect me?

Today's web user expects a fast and seamless website experience. Delivering that fast experience can result in increased visits, conversions and overall happiness.

As if you didn't need more incentive, **Google has announced that they are using page speed in their ranking algorithm.**

## About GTmetrix

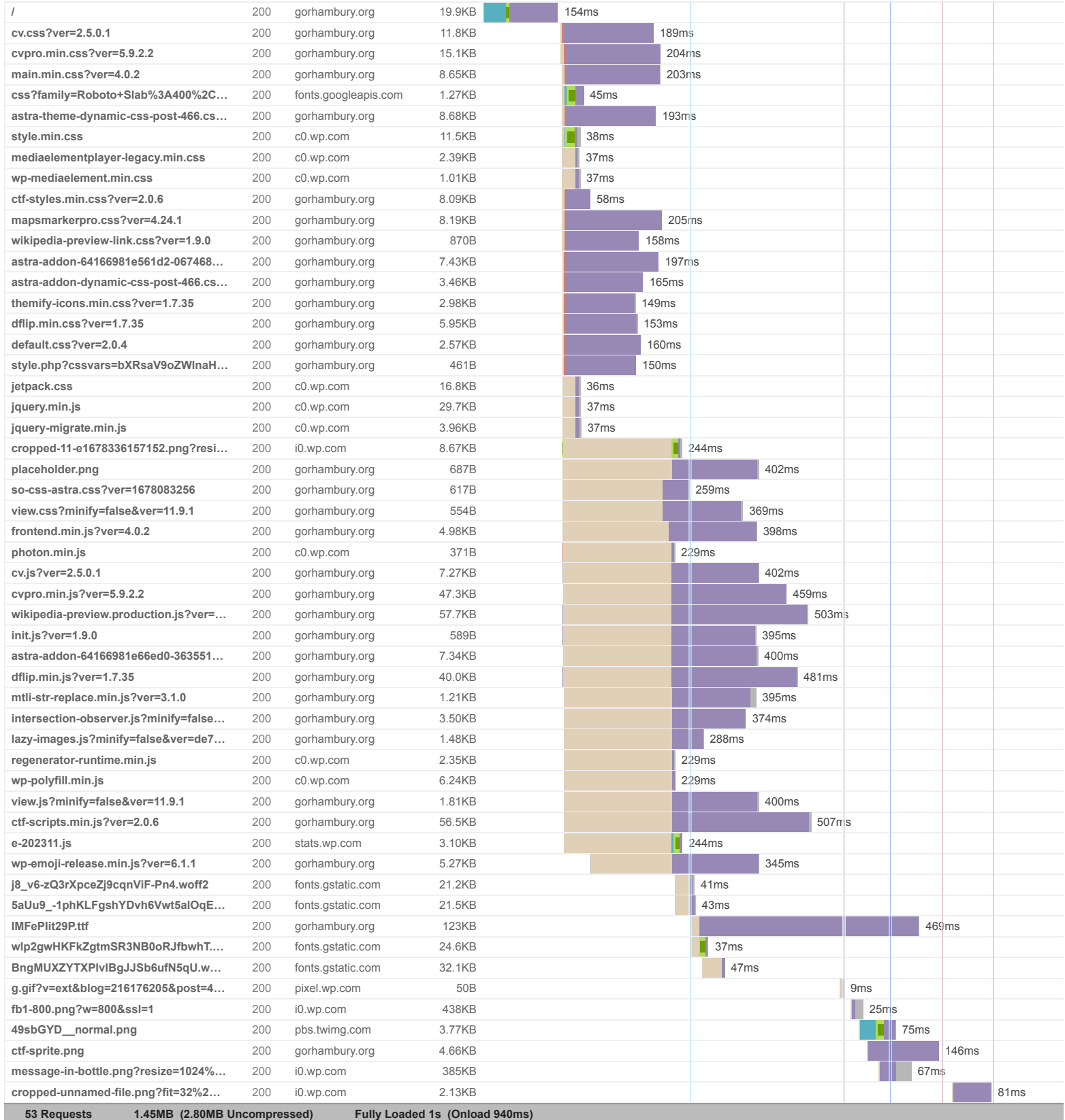


GTmetrix is developed by the good folks at Carbon60, a Canadian hosting company with over 27 years experience in web technology.

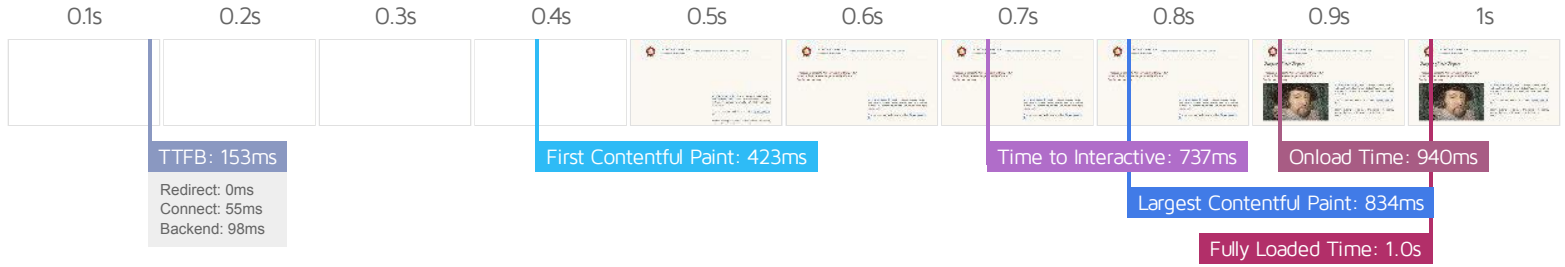
<https://carbon60.com/>

The waterfall chart displays the loading behaviour of your site in your selected browser. It can be used to discover simple issues such as 404's or more complex issues such as external resources blocking page rendering.

### New Gorhambury – Francis Bacon Steganography







### Performance Metrics

<p><b>First Contentful Paint</b></p> <p>How quickly content like text or images are painted onto your page. A good user experience is 0.9s or less.</p>	<p>Good - Nothing to do here</p> <p><b>422ms</b></p>	<p><b>Time to Interactive</b></p> <p>How long it takes for your page to become fully interactive. A good user experience is 2.5s or less.</p>	<p>Good - Nothing to do here</p> <p><b>737ms</b></p>
<p><b>Speed Index</b></p> <p>How quickly the contents of your page are visibly populated. A good user experience is 1.3s or less.</p>	<p>Good - Nothing to do here</p> <p><b>580ms</b></p>	<p><b>Total Blocking Time</b></p> <p>How much time is blocked by scripts during your page loading process. A good user experience is 150ms or less.</p>	<p>Good - Nothing to do here</p> <p><b>0ms</b></p>
<p><b>Largest Contentful Paint</b></p> <p>How long it takes for the largest element of content (e.g. a hero image) to be painted on your page. A good user experience is 1.2s or less.</p>	<p>Good - Nothing to do here</p> <p><b>834ms</b></p>	<p><b>Cumulative Layout Shift</b></p> <p>How much your page's layout shifts as it loads. A good user experience is a score of 0.1 or less.</p>	<p>Good - Nothing to do here</p> <p><b>0.05</b></p>

### Browser Timings

Redirect	0ms	Connect	55ms	Backend	98ms
TTFB	153ms	First Paint	423ms	DOM Int.	732ms
DOM Loaded	737ms	Onload	940ms	Fully Loaded	1.0s

IMPACT	AUDIT	
Low	<b>Serve static assets with an efficient cache policy</b>	Potential savings of 44.9KB
Low	<b>Properly size images</b>	Potential savings of 454KB
Low	<b>Avoid an excessive DOM size</b> <small>TBT</small>	591 elements
Low	<b>Avoid large layout shifts</b> <small>CLS</small>	4 elements found
Low	<b>Reduce unused JavaScript</b> <small>LCP</small>	Potential savings of 151KB
Low	<b>Avoid enormous network payloads</b> <small>LCP</small>	Total size was 1.45MB
Low	<b>Eliminate render-blocking resources</b> <small>FCP LCP</small>	Potential savings of 0 ms
Low	<b>Ensure text remains visible during webfont load</b> <small>FCP LCP</small>	1 font found
Low	<b>Avoid long main-thread tasks</b> <small>TBT</small>	1 long task found
Low	<b>Reduce JavaScript execution time</b> <small>TBT</small>	100ms spent executing JavaScript
Low	<b>Reduce unused CSS</b> <small>FCP LCP</small>	Potential savings of 54.4KB
Low	<b>Reduce initial server response time</b> <small>FCP LCP</small>	Root document took 98ms
Low	<b>Avoid serving legacy JavaScript to modern browsers</b> <small>TBT</small>	Potential savings of 6.09KB
Low	<b>Avoid non-composited animations</b> <small>CLS</small>	24 animated elements found
Low	<b>Avoid chaining critical requests</b> <small>FCP LCP</small>	41 chains found
N/A	<b>Largest Contentful Paint element</b> <small>LCP</small>	1 element found
N/A	<b>Minimize main-thread work</b> <small>TBT</small>	Main-thread busy for 625ms
N/A	<b>Reduce the impact of third-party code</b> <small>TBT</small>	Total size was 0.99MB
N/A	<b>User Timing marks and measures</b>	